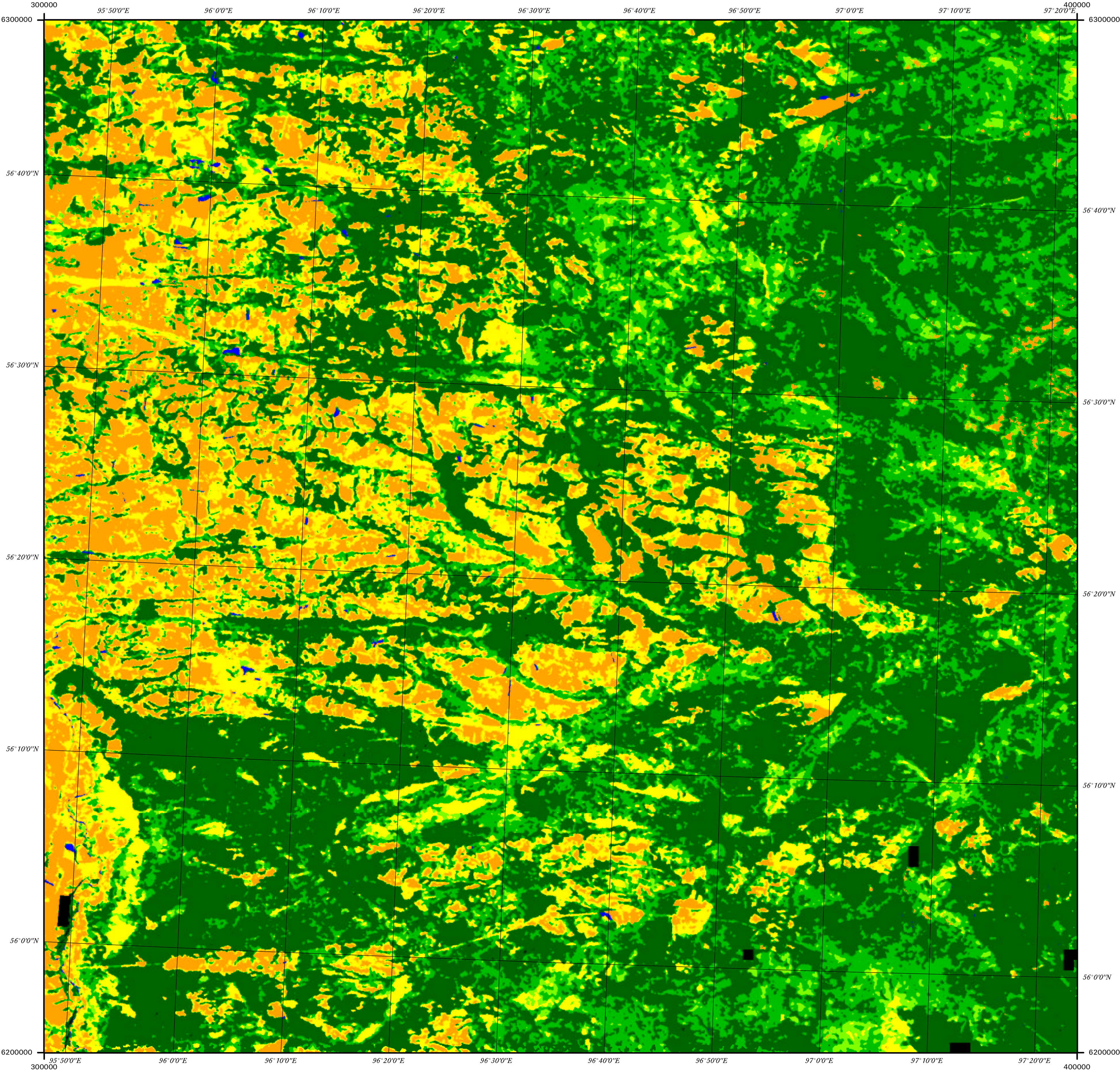


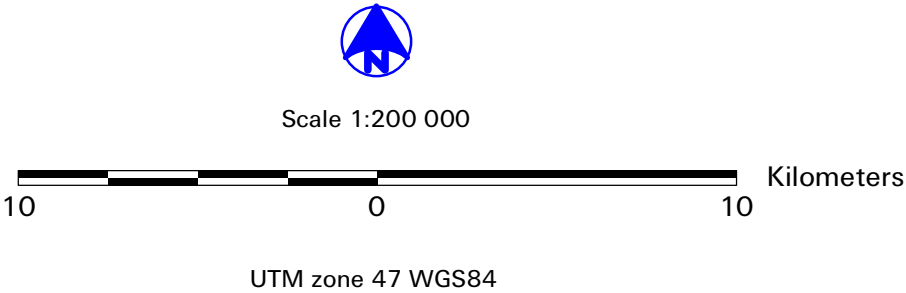
SIBERIA-SAR Imaging for
Boreal Ecology
and Radar
Interferometry
Applications

FOREST COVER MAP Tinsky FE

Internal Map Code G06



Acknowledgement:
SIBERIA was financed through the European Commission,
Center of Earth Observation, Contract No. ENV4-CT97-0743-SIBERIA.
Satellite data was made available through ESA's 3rd ERS
Announcement of Opportunity (Project Number J03.120)
and NASA's JERS-1 initiative "Global Boreal Forest Mapping".
The data were acquired by a mobile receiving station in
Ulaanbaatar, Mongolia of the German Aerospace Center (DLR).
Radar data co-registration and mosaicking was performed with
GAMMA AG software.
European project partner institutions: CESBIO/France, CEH/UK,
DLR/Germany, GAMMA/Switzerland, IASIA/Austria,
SATELLUS/Sweden, SCOD/UK, TWS/Wales, VTI/Finland.
Russian project partner institutions are:
East Siberian Forestry Inventory and Planning Enterprise/Krasnoyarsk,
Regional Forest Inventory and Management/Irkutsk,
Department of Forest Inventory and Management/Krasnoyarsk,
V.V.Dokuchaev Soil Institute/Moscow.



- Legend**
- Non-forest Classes:**
- Image data significantly affected by topography
 - Missing image data
 - Water
 - Open land
- Forest Classes: Growing Stock Volume (m³/ha)**
- <21
 - 21-50
 - 51-80
 - >80

